



**FRANKLIN** UNIVERSITY SWITZERLAND



# **PARENT AND FAMILY HANDBOOK**

**2017-2018 ACADEMIC YEAR**

**THE MISSION of Franklin University Switzerland is to provide a cross-cultural and multinational learning and living environment that inspires students to engage the world. We challenge students through a curriculum that integrates the liberal arts with professional pathways, and classroom learning with Academic Travel to destinations around the world. A Franklin education produces critical thinkers who are culturally literate, ethically aware and intellectually courageous. We prepare students to become responsible, compassionate, and collaborative leaders in an increasingly complex and interconnected world.**



Franklin University Switzerland (FUS), named for the United States' first and most illustrious ambassador to Europe, was founded in 1969 as a nonprofit, independent, post-secondary institution.

The University is accredited in the United States by the Middle States Commission on Higher Learning and in Switzerland by the Swiss University Conference, and offers bachelor's and master's degree programs, foundation/gap year programs, and summer schools.

In the highest tradition of the liberal arts concept, Franklin University Switzerland advocates that international studies should be an integral part of a higher education, as a prelude to and basis for a student's commitment to a major field of study.

We define higher education from its beginning as the experience of thinking internationally. Our emphasis, both academic and social, on global perspectives is designed to affect the direction and meaning of a student's university experience, life and career.

This commitment to providing courses of study that are international in perspective and cross-cultural in content is the cornerstone of our educational mission. As early as 1973, we defined this as the "International Imperative" in education.

Our curriculum is designed to respond to shifts in social, political and economic conditions around the world. The result is a singular learning experience gained from cross-cultural, highly responsive global perspectives.

# CONTENTS

|  |                   |
|--|-------------------|
| <b>Mission and Vision</b> .....                                      | 1                 |
| <b>Greetings From the President</b> .....                            | 4                 |
| <b>Greetings From the Franklin Family Association</b> .....          | 5                 |
| <b>Academic Calendar</b> .....                                       | 6                 |
| <b>Getting Involved</b> .....  | 7                 |
| Volunteer Opportunities, Travel and Events for Franklin Parents..... | 7                 |
| Supporting Franklin.....   | 8                 |
| <b>Visiting Campus</b> .....   | 9                 |
| Campus Visits, How to Get to Lugano .....                            | 9                 |
| Accommodations.....  | 10                |
| Dining.....  | 11                |
| Shopping/Personal Items .....  | 12                |
| Storage Facilities, Places of Worship, Car Rental .....              | 13                |
| <b>Staying Connected</b> .....                                       | 14                |
| Contacting Your Student .....  | 14                |
| Keeping Current .....  | 15                |
| Thoughtful Touches .....   | 15                |
| <b>Academic Life</b> .....   | 16                |
| Core Requirements, Grades, Shared Access for Parents.....            | 16                |
| Honors Programs, Graduation Requirements .....                       | 17                |
| Graduation with Distinction, Student Privacy (FERPA).....            | 18                |
| Accessibility Services .....   | 19                |
| <b>Career Preparation</b> .....                                      | 21                |
| Career Services.....   | 21                |
| Franklin Programs, Networks .....                                    | 21                |
| Career Mentoring .....   | 21                |
| <b>Success After Franklin</b> .....                                  | 22                |
| Alumni Spotlights .....  | 23                |
| <b>Code of Conduct</b> .....   | 24                |
| <b>Residential Life</b> .....  | 25                |
| Housing Guidelines and Policies .....                                | 25                |
| Living Off-Campus.....   | 27                |
| Food Services .....  | 27                |
| Health Care .....  | 27                |
| <b>Student Visas and Transportation</b> .....                        | 29                |
| <b>Culture Shock</b> .....   | 30                |
| <b>Money Matters</b> .....   | 31                |
| Financial Aid .....  | 31                |
| Scholarships and Merit Awards .....                                  | 32                |
| Payments of Invoices and Fees .....                                  | 32                |
| Banking, ATMs and Money Exchange .....                               | 32                |
| <b>Helpful Numbers</b> .....   | Inside back cover |



# GREETINGS

## FROM THE PRESIDENT'S OFFICE

### Dear Parents and Families,

On behalf of everyone at Franklin University Switzerland, I wish to welcome you as parents of either new or returning students. I am pleased that you and your son or daughter have chosen to be a part of the Franklin University Switzerland community. This is an invaluable and crucial period in the lives of both students and their families. We all are committed to helping our students grow and achieve their goals while enjoying rewarding and life-changing relationships and experiences.

I hope you will find this handbook helpful. It contains important information to support your efforts when counseling your son or daughter throughout the entire college experience. It has been created to provide you a better understanding of Franklin University Switzerland, studying abroad and living in a foreign culture.

Education is a lifelong endeavor. I am certain that the skills your son or daughter will develop at Franklin will provide a strong base for future growth and continued learning both professionally and personally.

The education and well-being of your child are extremely important to us. In this handbook you will find the contact information for all members of key departments at Franklin. Please feel free to get in touch with us should you have any concerns or questions. I also encourage you to urge your child to seek our advice and help whenever needed to ensure a successful experience at Franklin.

With best regards,



Greg Warden, President



# GREETINGS

## FROM THE FRANKLIN FAMILY ASSOCIATION

### Dear Fellow Franklin Parents and Families,

As the Chairman of the Franklin Family Association (FFA), Franklin's parent volunteer organization, I wish you a warm welcome to the 2017-2018 academic year. The Franklin experience is one of the most amazing opportunities in higher education. It brings to your son or daughter a range of opportunities that will excite them, challenge them and prepare them for a rewarding future.

Such a fascinating experience prompts a whole host of questions, whether you are brand new or a seasoned veteran to having a college-bound student. To help you find answers Franklin has put together this Parent and Family Handbook. We hope you find it to be a valuable resource as you prepare for the year ahead.

As the parents of three children who attended and graduated from Franklin, my wife, Sue and I are deeply committed to the University and the education provided, both inside and outside the classroom. We appreciate the opportunities that Steven '06 and Ryan '09 and Curran '16 enjoyed at Franklin and decided to pay it forward by becoming parent volunteers in the FFA.

The FFA complements the work of the University in order to enrich and enhance the lives of students and improve the well-being of the Franklin community. It is comprised of interested parents who come together regularly with the Director of Alumni and Parent Relations to hear updates from the University, discuss challenges and solutions and help students in meeting their greater career and professional goals. The FFA supports the Franklin experience now and into the future.

Please join us in our efforts to help the students and Franklin University Switzerland. It is incredible how the investment of a few hours a month can pay huge dividends in the lives of a very special and important group of people.

There are many other volunteer opportunities available and they are described in further detail in the following pages. When you see a volunteer opportunity that interests you or if you have specific questions please contact Tara Bracher, Director of Alumni and Parent Relations (tbracher@fus.edu).

Welcome to Franklin!



Stanley M. Ellis, Trustee, P'06, P'09, P'16  
Chairman, Franklin Family Association

| ACADEMIC YEAR 2017-2018  | FALL 2017                    | SPRING 2018    |
|--|------------------------------|----------------|
| <b>New Students Arrive</b>   | Aug. 22                      | Jan. 18        |
| <b>Orientation</b>   | Aug. 22-27                   | Jan. 18-21     |
| <b>Returning Students Arrive</b>   | Aug. 25                      | Jan. 19        |
| <b>New Student Registration</b>  | Aug. 25                      | Jan. 19        |
| <b>Classes Begin</b>   | Aug. 28                      | Jan. 22        |
| <b>Deadline for Schedule Changes Drop/Add/Audit</b>  | Sept. 1                      | Jan. 26        |
| <b>February Break</b>  | NA                           | Feb. 23        |
| <b>Academic Travel</b>   | Oct. 21-Nov. 4               | Mar. 10-24     |
| <b>Advising &amp; Registration</b>   | Nov. 6-17                    | Mar. 26-Apr. 6 |
| <b>Easter Break</b>  | NA                           | Apr. 2         |
| <b>University Day</b><br><small>Classes will not be held as students are expected to participate in scheduled events</small> | NA                           | Apr. 11        |
| <b>Withdrawal Deadline</b>   | Nov. 23                      | Apr. 20        |
| <b>Thanksgiving Break</b>  | Nov. 24                      | NA             |
| <b>Last Day of Classes</b>   | Dec. 8                       | May 4          |
| <b>Reading Days</b>  | Dec. 9-10                    | May 5-6        |
| <b>Final Exams</b><br><small>Make up exams will be held on the last day of the exam period through 18:00</small>             | Dec. 11-15                   | May 9-15       |
| <b>Graduation</b>  | NA                           | May 20         |
| <b>Offices Closed</b>  | Dec. 25, 2017 – Jan. 5, 2018 | NA             |

\*Please note: Calendar dates are binding. Late arrivals and early departures are not permitted.

Just as we ask our students to be active and involved in their education, we invite family members to take advantage of the many opportunities that we offer to get involved, volunteer and make a difference in the lives of students and the growth of the University. Please see below for information about ways to be involved, visit our Parent Portal: [www.fus.edu/parents-families](http://www.fus.edu/parents-families) or contact Tara Bracher, Director of Alumni and Parent Relations, at [tbracher@fus.edu](mailto:tbracher@fus.edu) with any questions.

### FRANKLIN FAMILY ASSOCIATION

The Franklin Family Association (FFA) was founded in 2009 by a group of current Franklin parents who were interested in becoming actively involved in the life of Franklin and its students. The mission of the Franklin Family Association is to “involve Franklin parents and guardians in programs and activities to enrich the lives of their students as well as contribute to the overall well being of the University.”

The FFA is currently comprised of dedicated parents and family members. FFA Members are invited to join a bi-monthly conference call with the Director of Alumni and Parent Relations and other members of the Franklin staff to get updates about new and exciting things going on at the University, discuss challenges and solutions of having students studying overseas and and participate in initiatives designed to help students in meeting their greater career and professional goals. For more information or to join, please email: [tbracher@fus.edu](mailto:tbracher@fus.edu).

### FRANKLIN ALUMNI AND PARENT ACADEMIC TRAVEL

At Franklin, we believe in the educational value of travel and cross-cultural exposure. We invite parents to take part in this special part of the Franklin experience and join other parents and alumni on Academic Travels to destinations around the world. For more information about the travel options offered for family members this year, please visit our website: [www.fus.edu/parents-families](http://www.fus.edu/parents-families) or contact the Director of Alumni and Parent Relations at [tbracher@fus.edu](mailto:tbracher@fus.edu).

### FRANKLIN ADMISSIONS AMBASSADOR PROGRAM

Alumni and Parent Admissions Ambassadors play an important role in helping Franklin enroll the best and brightest students from around the world. Admissions Ambassadors attend University Fairs, accepted student receptions and summer send-offs as well as answer questions of prospective students and parents.

To join the Admissions Ambassador team, please visit the website: [www.fus.edu/alumni/give/volunteer/admissions-ambassadors](http://www.fus.edu/alumni/give/volunteer/admissions-ambassadors) or contact Tara Bracher at [tbracher@fus.edu](mailto:tbracher@fus.edu).

### ALUMNI AND PARENT EVENTS

Each year Franklin organizes Alumni and Parent Events in cities around the world. These events are a great opportunity for alumni, parents and friends to meet each other as well as members of the University’s faculty and staff. Please visit: [www.fus.edu/alumni/alumni-events](http://www.fus.edu/alumni/alumni-events) for more details.

### SPECIAL EVENTS ON CAMPUS

Scheduled presentations, talks and events on campus: Franklin is excited to welcome and host a range of different speakers, presenters and intellectuals to campus throughout the year. Events range from TEDx talks to presentations from US Ambassadors. All members of the Franklin and greater Lugano community are invited to campus to connect with each other in lively discussion and intellectually stimulating presentations. To see upcoming events on campus please visit: [www.fus.edu/news-events](http://www.fus.edu/news-events).

### Commencement: May 20, 2018

This is a very important time in the lives of graduating students and their families. During Commencement Week, the University is bustling with activities such as the annual Alumni Council-sponsored Boat Cruise, the Awards Ceremony, the Monte San Salvatore Graduates' Dinner, and Commencement rehearsal, all of which make this an unforgettable weekend. All family and friends of the graduates are welcome to attend the Commencement Ceremony. A detailed schedule of the weekend's events is posted on the University website each spring.

### SUPPORTING FRANKLIN

Gifts from Franklin University Switzerland alumni, friends, parents and others provide the margin of excellence at Franklin. Philanthropic support can help ensure the University's foundations through enhanced infrastructure, buildings and learning environments. Additionally, targeted private support through scholarships, professorships, library acquisitions, lab furnishings and the latest in technology helps us maintain and improve the quality of a Franklin University Switzerland education.

### Checks

For contributors from the United States, a check is one of the easiest and most commonly used ways of supporting Franklin University Switzerland. Make your check payable to Franklin University Switzerland and mail it to:

Franklin University Switzerland, The Chrysler Building, 405 Lexington Ave., Floor 26, New York, NY 10174, U.S.A., Attn: Annual Giving, (Tax ID number 23-7075-717)

### Credit Card

Credit card gifts are convenient, easy and fast. You may use Franklin's secure online donation form ([www.fus.edu/makeagift](http://www.fus.edu/makeagift)) to charge your gift to your Visa, MasterCard, American Express or Discover card.

### Electronic Funds Transfers (EFTs)

An EFT, or bank draft, is also a convenient way to support the University. Most of our European supporters prefer to make their gifts in this way. For more information on EFTs or bank transfers, please contact the Office of Advancement: [advancement@fus.edu](mailto:advancement@fus.edu).

### CAMPUS VISITS

All Franklin parents and family members are welcome to visit the University at any time during the year. The Office of Advancement will gladly schedule a campus tour, visits with faculty, or meetings with members of the administrative staff for current/past parents as well as other family members. Our Offices in Sorengo, Switzerland are open from 8:30 am to 5:00 pm, Monday through Friday. To arrange a campus visit, please contact our Advancement team at [advancement@fus.edu](mailto:advancement@fus.edu).

### HOW TO GET TO LUGANO

You can fly directly to the Lugano Airport, located in Agno, about 15 minutes from the University. From the airport, shuttle buses and taxis run regularly to Lugano. The airport is served by Swiss International Airlines, and Etihad-Regional Air with flights to Lugano connecting via Zurich, Geneva, Rome and other European cities. Since many international flights arrive in Zurich and Milan, you can also make bus or train connections from either of the two cities to Lugano. From Zurich, trains run directly from the airport to Lugano, and the duration of the trip is about 2.5 hours. From Milan, there is a bus shuttle service that arrives in Lugano in just over one hour.

### SHUTTLE BUS TRANSPORTATION FROM MILAN-MALPENSA AIRPORT TO LUGANO

Malpensa Express, JetBus and Lugano Servizi are shuttle bus companies that provide transfers from/to Milan and Lugano. Advance reservations are mandatory with shuttle bus companies and you pay the bus driver upon boarding in either Swiss francs or Euros. These services pick you up from the Milan-Malpensa Airport and drop you off in just over one hour at the Lugano Train Station. For latest schedule information and pricing, consult:

- Malpensa Express: [www.malpensa-express.com/en](http://www.malpensa-express.com/en)
- JetBus: [www.jetbus.ch](http://www.jetbus.ch)
- Lugano Servizi: [www.luganoservices.ch](http://www.luganoservices.ch)



### Limo Service from Milan to Lugano

Limo service can be arranged from anywhere in Milan to anywhere in Lugano. For more information please visit EC Limousine Service's website: [www.eclimousineservice.com](http://www.eclimousineservice.com).

### Train Travel

Train travel is extremely comfortable and convenient in Switzerland. For more information about traveling by train in Switzerland, visit the SBB website: [www.sbb.ch/en](http://www.sbb.ch/en).

## ACCOMMODATIONS

Below is a partial list of accommodations in Lugano and the surrounding areas. The following hotels offer special rates for visitors and guests of Franklin University Switzerland. To receive these rates, be sure to inform the hotel that you are a Franklin University Switzerland guest.

### The View Lugano ★ ★ ★ ★ ★

[www.theviewlugano.com/en/rooms/](http://www.theviewlugano.com/en/rooms/)  
Email: [info@theviewlugano.com](mailto:info@theviewlugano.com)  
Tel. +41 (0)91 210 0000

*Please make sure you enter the access code FRANKLINUTVL when making your reservation online*

### Villa Principe Leopoldo ★ ★ ★ ★ ★

[www.leopoldohotel.com](http://www.leopoldohotel.com)  
Email: [info@leopoldohotel.com](mailto:info@leopoldohotel.com)  
+41 91 985 8855

### Grand Hotel Villa Castagnola ★ ★ ★ ★ ★

[www.villacastagnola.com](http://www.villacastagnola.com)  
Email: [info@villacastagnola.com](mailto:info@villacastagnola.com)  
+41 91 973 2555

### Splendide Royal ★ ★ ★ ★ ★

[www.splendide.ch](http://www.splendide.ch)  
Email: [welcome@splendide.ch](mailto:welcome@splendide.ch)  
+41 91 985 7711

### Grand Hotel Eden ★ ★ ★ ★ ★

[www.edenlugano.ch](http://www.edenlugano.ch)  
Email: [welcome@edenlugano.ch](mailto:welcome@edenlugano.ch)  
+41 91 985 9200

### Hotel Lugano Dante Center ★ ★ ★ ★ ★

[www.hotel-luganodante.com](http://www.hotel-luganodante.com)  
+41 91 910 5700

### Hotel de la Paix ★ ★ ★ ★ ★

[www.delapaix.ch](http://www.delapaix.ch)  
Email: [booking@delapaix.ch](mailto:booking@delapaix.ch)  
+41 91 960 6060

### Hotel Colorado ★ ★ ★

[www.colorado.ch](http://www.colorado.ch)  
Email: [hotel@colorado.ch](mailto:hotel@colorado.ch)  
+41 91 994 1631

### Hotel Federale ★ ★ ★

[www.hotel-federale.ch](http://www.hotel-federale.ch)  
Email: [info@hotel-federale.ch](mailto:info@hotel-federale.ch)  
+41 91 910 0808

### Hotel International Au Lac ★ ★ ★

[www.hotel-international.ch](http://www.hotel-international.ch)  
Email: [info@hotel-international.ch](mailto:info@hotel-international.ch)  
+41 91 922 75 41

### Hotel Delfino ★ ★ ★

[www.hoteldelfinolugano.ch](http://www.hoteldelfinolugano.ch)  
Email: [info@delfinolugano.ch](mailto:info@delfinolugano.ch)  
+41 (0)91 985 9999

### IBIS Hotel Lugano Paradiso ★ ★

[www.accorhotels.com](http://www.accorhotels.com)  
Email: [H6776@accor.com](mailto:H6776@accor.com)  
Tel. +41 (0)91 986 19 09

## DINING

If you are looking for a distinctive restaurant to take your son or daughter to during your next visit to campus or maybe a special place to celebrate your graduate's success, Lugano and the surrounding area's wide array of restaurants will certainly not disappoint. The restaurants listed below, which cover a wide price range, are recommended by Franklin University Switzerland. Reservations are advisable.

### Bottegone del Vino

Via Magatti 3  
6900 Lugano  
+41 91 922 7689  
Closed Sunday

### Ristorante Grotto Riviera

Via Pezza 6  
6982 Agno  
+41 91 605 2155  
Closed Sunday

### Grotto della Salute

Via Madonna della  
Salute 10  
6900 Massagno  
+41 91 966 0476  
Closed Sunday

### Grotto Grillo

Via Ronchetto 6  
6900 Lugano  
+41 91 970 1818  
Closed Sunday

### La Cucina di Alice

Riva Vela 4  
6900 Lugano  
+41 91 922 0103

### Locanda del Boschetto

Via al Boschetto 8  
6900 Lugano  
+41 91 994 2493  
Closed Monday

### Osteria Gallo d'Oro

Strada Cantonale 3a  
6964 Davesco-Soragno  
+41 91 941 1943  
Closed Sunday and  
Monday

### Principe Leopoldo Restaurant

Via Montalbano 5  
6900 Lugano  
+41 91 985 8855

### Ristorante Arté

Piazza Emilio Bossi 7  
6900 Lugano  
+41 91 973 4800  
Closed Sunday and  
Monday

### Ristorante da Candida

Viale Marco da  
Campione 4  
6911 Campione d'Italia  
+41 91 649 7541  
Closed Monday all day,  
Tuesday closed at  
lunchtime

### Ristorante Piccolo Vigneto

Via al Roccolo 19  
6962 Viganello - Albonago  
+41 (0)91 972 3985  
Closed Monday and  
Tuesday

### Ristorante ai Giardini di Sassa

Villa Sassa Hotel,  
Residence & SPA  
Via Tesserete 10  
6900 Lugano  
+41 (0)91 911 4111

### SHOPPING/PERSONAL ITEMS

Lugano and the surrounding area offer shops for every taste. In the famous Via Nassa and Via Pessina, two of the most historical streets in the old town of Lugano, you will find many stores carrying a wide variety of Swiss, Italian and French luxury brands such as Hermes, Versace, Gucci, Issey Miyake, Armani, Rolex and Cartier. Numerous Swatch, Tissot, grocery stores and other department stores can also be found in the city center.

Most shops and department stores are open between the hours of 8:00 and 6:30 p.m., Monday – Friday. On Thursdays some stores stay open until 9:00 p.m. On Saturdays most stores close around 5:00 p.m. and on Sundays all stores in general remain closed, in accordance with the cantonal law of Ticino.

For a complete shopping guide to Lugano, please visit the Lugano Tourism website at: [www.luganoturismo.ch/en/see-do/shopping](http://www.luganoturismo.ch/en/see-do/shopping).

#### Manor Centro

Piazza Dante 2  
6900 Lugano  
+41 91 912 7699  
[www.manor.ch](http://www.manor.ch)

#### Migros

Via Pretorio 15  
6900 Lugano  
+41 91 923 7213  
[www.migros.ch](http://www.migros.ch)

#### Gabbani

Via Pessina 12  
6900 Lugano  
+41 91 911 3090  
[www.gabbani.com](http://www.gabbani.com)  
[contact@gabbani.com](mailto:contact@gabbani.com)

#### Coop City Lugano

Via Nassa 22  
6900 Lugano  
+41 91 913 7333  
[www.coop.ch](http://www.coop.ch)

#### Picobello

Piazza della Stazione  
6900 Lugano  
+41 91 923 5818  
Note: Picobello is located at the Lugano train station and is open daily from 6:00 am-10:00 pm, including Sunday.

#### Centro Lugano Sud

Via Cantonale  
6916 Grancia  
+41 91 985 2872  
[www.centrosud.ch](http://www.centrosud.ch)  
Note: Some of the stores found at Centro Lugano Sud include: Ikea (furniture and household goods), Media Markt (electronics store), H&M, Vögele Shoes, Ochsner Sport (sporting goods store), Coop (supermarket) and a variety of others.

#### Farmacia Sorengo

Via Paradiso 24  
6924 Sorengo  
+41 91 980 9115  
[www.farmaciamalcantonese.com/farmasorengo/](http://www.farmaciamalcantonese.com/farmasorengo/)

#### PharmaExpress

Lugano Train Station  
+41 91 940 1313  
[www.pharma-express.ch](http://www.pharma-express.ch)  
Open daily from 7:00 am-10:00 pm

Note: If you are in need of a pharmacy outside normal opening hours, please go to the nearest pharmacy to find out which pharmacy is on special late-night duty. This information will be posted on the entry door of any pharmacy. Callers within Switzerland may also call 144 for the same information.

### STORAGE FACILITIES

The University recommends the use of Bolliger & Tanzi, a local shipping and storage company for students wishing to store personal belongings in Lugano in between academic years (i.e. during the summer break) or for an extended period of time. Bolliger & Tanzi can be contacted privately for personal arrangements at any point during the year. However, the University normally arranges a pick up at the end of the academic year. Boxes and labels are available in the Office of Student Life prior to pick up.

#### Bolliger & Tanzi

Via al Lido 6  
6962 Viganello-Lugano  
+41 91 973 3535  
Email: [info@bolliger.org](mailto:info@bolliger.org)  
[www.bolliger.org](http://www.bolliger.org)

Ciao Box is also recommended, but it is an independent option. Students must contact the company and are responsible for arranging pick up and drop off of items. Contact the company at: [ciaobox.ch/](http://ciaobox.ch/)

### PLACES OF WORSHIP

Members of the FUS community come from every corner of the globe and identify with many cultural, spiritual, racial and international backgrounds. Diversity is part of our life, every day. Franklin students practice many faiths. Local places of worship represent a large number of faith traditions.

For specific information about locations, addresses and times of services please contact the Office of Student Life.

### CAR RENTALS

#### Avis

Via C. Maraini  
6900 Lugano  
+41 91 913 4151  
[www.avis.ch](http://www.avis.ch)

#### Europcar

Via Monte Boglia 24  
6900 Lugano  
+41 91 971 0101  
[www.europcar.ch](http://www.europcar.ch)

#### Hertz

Via San Gottardo 13  
6900 Lugano  
+41 91 923 4675  
[www.hertz.ch](http://www.hertz.ch)

#### Smart Rent

Via Giulio Vicari 14  
6900 Lugano-Cassarate  
+41 91 993 1313  
[www.smartrent.ch/](http://www.smartrent.ch/)



# STAYING CONNECTED

## HOW TO KEEP IN TOUCH

### CONTACTING YOUR STUDENT

#### Telephone

There are no land line telephones in any of the rooms/apartments on campus, with the exception of the rooms belonging to the Resident Assistants. All residence facilities have network access via wi-fi, however — making it possible to connect via Skype or other similar services. Most students typically purchase a mobile phone and Swiss SIM card in Lugano (help is provided during the new-student orientation) and use this as their main way of communicating with their parents.

To call a number in Switzerland, dial your local international access code (i.e., 011 if you are calling from the United States), then 41, and then rest of the number.

The University receptionist can be reached Monday through Friday from 8:30 a.m. to 5:00 p.m. (CET) at +41 91 985 2260. In case of emergency after regular opening hours, the on-duty staff person can be reached at: +41 79 211 4689. The phone number of the Office of the Dean of Student Life and Engagement is: +41 91 985 2272.

#### Postal Mail

Every student, whether living on or off campus, is assigned a mailbox number at the University. Student mail is distributed directly from Reception to each student's personal mailbox (located in the Main Villa, Kaletsch Campus). All mail or packages should be addressed as follows:

[Student's Name]  
Franklin University Switzerland  
Via Ponte Tresa 29  
6924 Sorengo  
Switzerland

### KEEPING CURRENT

We encourage you to keep up with the University through its publications and website, [www.fus.edu](http://www.fus.edu). If you are not receiving the University's mailings and/or emails, please send your updated contact information to: [advancement@fus.edu](mailto:advancement@fus.edu).

#### The Franklin Gazette

Our University magazine includes interesting and informative profiles, stories and columns about Franklin and Franklinites. Consult the Alumni section of our website for the latest issue.

#### The Student Handbook

The *Student Handbook* is a great resource for both parents and students regarding housing and student conduct policies. It also includes useful information about clubs and other opportunities for students to take advantage of both on and off campus.

#### Suggested Readings

*You're on Your Own (But I'm Here if You Need Me): Mentoring Your Child During the College Years* by Marjorie Savage (Simon and Schuster, 2003)

*Letting Go: A Parent's Guide to Today's College Experience* by Karen Levin Coburn and Madge Lawrence Treeger (HarperCollins, 2003)

*Don't Tell Me What to Do, Just Send Money: The Essential Parenting Guide to the College Years* by Helen E. Johnson and Christine Scheihas-Miller (St. Martin's Press, 2000)

### THOUGHTFUL TOUCHES

To send something for a special occasion, to celebrate a job well done or just because:

#### Florist

DAHRA  
Via Ferruccio Pelli 14  
6900 Lugano  
+41 91 922 2320  
Email: [info@dahra.ch](mailto:info@dahra.ch)  
[www.dahra.ch](http://www.dahra.ch)  
Italian, German, French,  
English spoken

#### Patisserie/Bakery

Grand Café Al Porto  
Via Pessina 3  
6900 Lugano  
+41 91 910 5131  
Email: [info@grand-cafe-lugano.ch](mailto:info@grand-cafe-lugano.ch)  
[www.grand-cafe-lugano.ch](http://www.grand-cafe-lugano.ch)  
Italian, German, French,  
English spoken

#### Gift Baskets

Gabbani  
Via Pessina 13  
6900 Lugano  
+41 91 911 3081  
Email: [contact@gabbani.com](mailto:contact@gabbani.com)  
[www.gabbani.com](http://www.gabbani.com)  
Italian, German, French,  
English spoken



# ACADEMIC LIFE

## GRADES

### CORE REQUIREMENTS

Core requirements at Franklin provide a common academic experience for all Franklin students regardless of their major field of study. The Franklin core curriculum affords students the opportunity to experience different academic disciplines in the spirit of the liberal arts as they pursue their desired specialized course of study. For complete details please see the Academic Catalog at [www.fus.edu/registrar/academic-catalog](http://www.fus.edu/registrar/academic-catalog).

### GRADES

The faculty of the University assesses student academic performance by assigning the following grades: A,B,C,D, plus and minus for each, and F. Grades are described in greater detail in the Academic Catalog.

The Grade Point Average (GPA) is calculated on a scale from 4 to 0, with equivalent letter grades (A to F) being recorded on the student's permanent record.

### MID-TERM GRADES

Following the Academic Travel period, all students receive mid-term grades. Students at academic risk (i.e., mid-semester course progress is below average scholarship: C- or below) will receive an individual notice, with a copy to their advisor. Mid-term grades are unofficial and reflect only the student's progress in a course at the middle of the semester. These grades do not necessarily represent half of the final grade and are not calculated into the semester GPA. In order to determine how specific requirements are weighed in calculating the final grade, students should consult the course syllabus or ask their professor.

### FINAL GRADES

Final grades are reported at the end of the semester. Students can view their final grades via the Self-Service system. The Registrar will also notify the student and parents or guardians when the student has exhibited exceptional academic performance and has been named to the Dean's List or if a student has demonstrated academic difficulty and is placed on probation or academic warning.

For more information about academics at Franklin, please consult the Academic Catalog or the Franklin website at: [www.fus.edu/registrar/academic-catalog](http://www.fus.edu/registrar/academic-catalog).

### SHARED ACCESS FOR PARENTS

Shared Access is a feature of Franklin's online student records system (known as My Franklin Self-Service) that allows students to provide parents or guardians with online access to their student account information. Via the Shared Access feature of My Franklin Self-Service, a student can share various items with a parent/guardian such as academic plan, course schedule, grade reports, unofficial transcript, etc. For more information, visit [www.fus.edu/registrar/shared-access-for-parents](http://www.fus.edu/registrar/shared-access-for-parents).

# ACADEMIC LIFE

## HONORS



### ACADEMIC HONORS

A student who achieves a semester grade point average of 3.5 or above will be named on the Dean's List. In order to qualify, a student must have completed a minimum of five courses of 3 credits each (15 credits). The student will be informed of the honor by letter and it will also be recorded on his/her transcript. Dean's List students are given priority in registration for courses, including Academic Travel, and housing placement requests.

### HONORS PROGRAM

The Franklin University Switzerland Honors Program is designed to expand the academic engagement of Franklin's best and brightest students even more. This exciting program offers interested and eligible students the opportunity to pursue cross-disciplinary research and scholarship while working closely with faculty mentors and other academically gifted students.

Students may enter the program after having completed at least one semester at Franklin University Switzerland or another institution of higher learning.

### GRADUATION REQUIREMENTS

Degrees are conferred in December, May and August. In order to participate in the Commencement Ceremony held each year in May, students must complete a Graduation Application, available from the Registrar's Office, by October 15 of the preceding year. Students who have completed all requirements for the degree of Bachelor of Arts may participate in the Commencement Ceremony held in May each

year. Candidates may also participate in the Commencement Ceremony in May if they have three courses (9 credits) or fewer to finish toward the completion of the degree and will complete all requirements by August 31 of the same year. Diplomas will be issued upon verification of completion of all degree requirements.

### GRADUATION WITH DISTINCTION

Students who complete their degree requirements in the range of cumulative grade point averages will receive their diploma noting their distinguished achievement.

|                 |             |
|-----------------|-------------|
| Summa Cum Laude | 3.90 – 4.00 |
| Magna Cum Laude | 3.70 – 3.89 |
| Cum Laude       | 3.50 – 3.69 |

### STUDENT PRIVACY

Franklin University Switzerland complies with the Family Educational Rights and Privacy Act of 1974 (FERPA), as amended. The policy adopted by the University permits students to review their educational records and prohibits the disclosure of those records to a third party without the written consent of the student with the exception of parents or guardians of dependent students, with whom the University reserves the right to communicate. All information belongs to the student and cannot be released without the permission of the student except in specific cases such as legally binding court orders.

As a small private university, Franklin relies on a close relationship with the parents and guardians of enrolled students. Therefore, the University reserves the right to correspond with parents and designated individuals regarding the progress of students, under the FERPA exception for disclosure to parents or guardians of a dependent student. This relationship is forged by students when they accept admission to Franklin University Switzerland and accept financial support when parents or guardians sign either the Financial Responsibility form, effectively claiming students as financial dependents during the admissions process, and/or the Declaration form issued by Student Life when students apply for a Swiss visa.

Franklin University Switzerland may also distribute the following information in appropriate situations without the student's permission under the definition of Directory Information: student's name, address, telephone number, email address, date and place of birth, class level, major, minor, enrollment status, dates of attendance, degrees and awards received, previous educational agencies or institutions attended by the student and participation in officially recognized campus activities.

Full FERPA information is sent to all students annually, and can also be found at: [www.fus.edu/registrar/student-privacy-ferpa](http://www.fus.edu/registrar/student-privacy-ferpa).

### ACCESSIBILITY SERVICES

Franklin University Switzerland is committed to providing reasonable accommodations in its programs to students who have documented disabilities, including learning disabilities.

We help foster success by coordinating accommodations and by organizing additional academic support through the Writing and Learning Center. As a small community of learners, we can offer individual support on many levels, with both qualified staff and trained student mentors and tutors. Typically, accommodations include extra exam time, the use of a computer for exams and the taking of exams in a distraction-free environment. Other accommodations may be offered on a case-by-case basis. Tutors can work with students on time-management, keeping track of assignments, and other college survival skills.

#### Documentation

The documentation required to register for accommodations must be produced by a qualified evaluator. Qualified evaluators may include licensed educational psychologists, clinical psychologists, learning disabilities specialists, medical doctors, and speech and language pathologists. The evaluating signature, name, address, phone number, title and qualifications of the evaluator need to be clearly indicated in the report. The report should include specific information about the student's functional limitations within an academic setting, and specific recommendations for accommodations or exemptions. It should also include an intake history and specify what kind of testing was conducted to determine that the student is disabled. The testing itself must be comprehensive, using statistically valid and reliable instruments, standardized with age-appropriate norms. Testing should normally have been conducted within three to five years of the initial request for accommodations.

#### How to Obtain the Right to Accommodations at Franklin

Students who have had accommodations in high school or those who may qualify for accommodations and would like to continue having accommodations at Franklin should take the following steps.

1. Contact Ms. Corbin Moro, Counselor and Accessibility Coordinator ([counselor@fus.edu](mailto:counselor@fus.edu)), either before they come to campus or as soon as they get to campus to arrange a meeting.
2. Bring any documentation they have to this meeting or send it by email beforehand. The Accessibility Coordinator will work with students to determine whether they qualify for accommodations at Franklin and if so, which kinds of accommodations are appropriate. The student and the Accessibility Coordinator will create a learning plan together.
3. Once the student's request for accommodations has been approved and a learning plan has been created, students will receive an email confirming which accommodations they qualify for. These accommodations are individually tailored

to meet specific needs and may be provisional or may be valid for the entire time the student in question is at Franklin. This information is strictly confidential and will not be included into students' academic files at Franklin.

4. It is then up to the student to decide for which classes they would like to receive these accommodations. Unlike high school, which may organize accommodations on students' behalf, at university it is the student's responsibility to request them for each and every course they take.

### **How to Request Accommodations for Specific Classes**

Once a student's right to accommodations has been approved, s/he may request accommodations for all of their classes, for none of them, or only for some. Professors will be advised that specific students have the right to use accommodations, but they will not arrange these accommodations for them.

It is strongly encouraged that students meet with the relevant professor during his or her office hours to discuss their learning style, which accommodations they would like to use for that particular class and how they can best succeed in that class.

Following the request, students will receive an email detailing the logistics of their accommodated exam. For all questions, please contact the Accessibility Coordinator ([counselor@fus.edu](mailto:counselor@fus.edu)) or the Director of the Writing and Learning Center, Dr. Ann Gardiner [agardiner@fus.edu](mailto:agardiner@fus.edu).



## **CAREER SERVICES**

Through its Career Services Office, Franklin offers programs, resources, strategies and services to help students prepare for their next steps after university. The office walks students through all stages of the career exploration and planning process including, but not limited to:

- Resume/CV refinement
- Interview skills
- Job and internships search skills
- Graduate school applications
- Specialized assistance

## **FRANKLIN FUTURES PROGRAM**

Each year Career Services offers Franklin students the opportunity to participate in a hands-on career planning and prep workshops. These events are hosted in collaboration with the Office of Advancement and the Franklin Family Association.

## **GOINGLOBAL AND VAULT**

All Franklin students and alumni have access to GoinGlobal and Vault. GoinGlobal is an online platform offering information on jobs, internships, and employment in general, in the US and globally. Vault is the ultimate destination for insider career and employment information. The site provides in-depth intelligence on what it is really like to work in an industry, company or profession, and how to position oneself to land that job or internship.

## **FRANKLIN CAREER ADVISORY NETWORK (FCAN)**

The Franklin Career Advisory Network (FCAN) provides Franklin alumni and current students with opportunities to connect with other alumni and parents who are willing to share information regarding their career paths and other career-related advice.

## **CAREER MENTORING PROGRAM**

Many Franklin alumni and parents volunteer to act as Career Mentors and are happy to provide students with support and guidance as they prepare for their careers. With a Career Mentor students can explore their career goals, gain an insider's perspective on a specific industry/organization, seek helpful suggestions for resume and cover letter writing, discuss the necessary skills for successful job interviews and more. If you would like to act as a Career Mentor for Franklin students, contact Tara Bracher, Director of Alumni and Parent Relations, at [tbracher@fus.edu](mailto:tbracher@fus.edu).

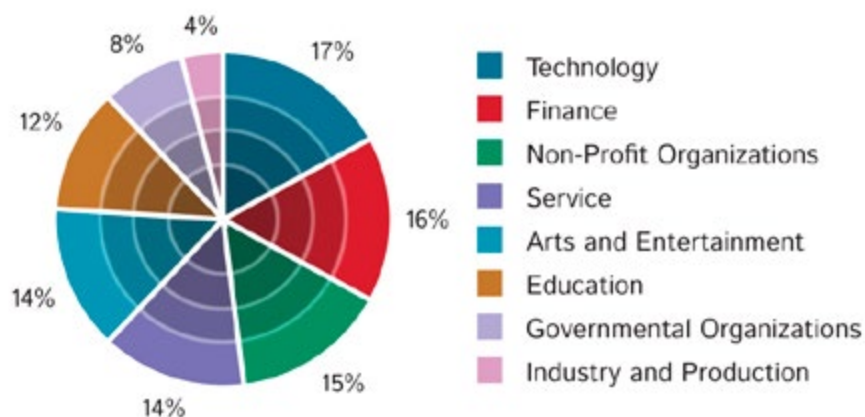
# SUCCESS AFTER FRANKLIN

According to a recent alumni survey, **three out of four Franklin graduates find full-time employment within 6 months of graduating, and 95% within a year.** Just under a third of Franklin graduates also progress to director or manager status within three years from graduating.

## Here are a few of the positions recent graduates have held:

- Account Manager
- Business Development Representative
- CEO/CFO
- Clinical Researcher
- Communications Manager
- Customer Relationship Manager
- Development Fellow
- Director of Women's Economic Empowerment
- Financial Consultant
- Graphic Designer
- Global Health Specialist
- Marketing Coordinator
- Managing Director
- Project Coordinator
- Tax Consultant

The versatility of Franklin graduates enables them to **find employment in a wide variety of sectors:**



## Employers that have hired recent Franklin graduates:

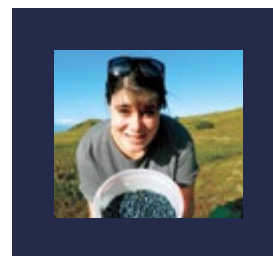
- Barclays PLC
- Bloomberg LP
- BMW
- British Embassy
- Deloitte
- Ernst & Young
- Fidelity Investments
- Google
- Global Affairs Canada
- IBM
- Leighton Broadcasting
- Loro Piana
- Prince's Charity for Sustainable Development
- US Department of State

Over **a third of Franklin graduates go on to Master's or Ph.D programs** in globally renowned universities

## Postgraduate university destinations (Masters/Ph.D):

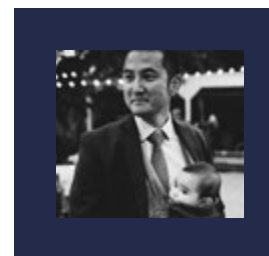
- Bocconi University
- Brandeis University
- Columbia University
- ETH, Zurich
- Franklin University Switzerland
- George Washington University
- Graduate Institute Geneva
- Harvard University
- Johns Hopkins University
- London School of Economics
- Monterey Institute of International Studies
- Moscow State University
- New York University
- Stanford University
- Université de la Sorbonne
- University College London
- University of California at Berkeley Law School
- University of Oxford
- University of Manchester
- University of San Diego
- University of Southern California
- University of Texas at Austin
- Yale University

## ALUMNI SPOTLIGHT



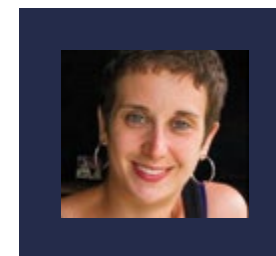
**Tamiah Liebersbach '11**  
Economic Empowerment Manager  
YWCA Alaska

"Franklin inspired me to look at solutions to big picture problems. Alaska has one of the worst gender pay gaps in the US. The experience I gained from Franklin's global perspective made it easy for me to take on this issue and start to make progress for my community."



**Kota Tabuchi '03**  
Managing Director: Africa  
Travel Beyond

"My ability to communicate effectively with people of various backgrounds and the life experience of living abroad has helped tremendously. Franklin was such a unique experience that it made me a "stand out" candidate for any job. I wouldn't be in my current career field if it weren't for Franklin."



**Marta Oprisan Berggren '07**  
First-Secretary and Vice-Consul, Amman Jordan  
Global Affairs Canada

"Moving every 3 years to a new place of completely different cultures is tough, but at Franklin I learned to look at our differences as a learning (sometimes laughing) opportunity, making me able to adapt in almost any environment."

**Franklin University Switzerland is a community of individuals dedicated to the pursuit of an international education in an environment conducive to learning. The University fully recognizes the rights and responsibilities of its students, faculty and staff, as well as their obligations to maintain high standards of social and personal conduct. Enrollment at Franklin, therefore, constitutes an agreement between the student and the University to respect the rights of the University and all the members of the University community. Failure to adhere to the rules and regulations of the University places the student in violation of the Code of Conduct and subject to disciplinary action.**

**Because of its unique location in Switzerland, Franklin University Switzerland must require students to conduct themselves in a manner which reflects credit upon themselves, the University and their home countries, and which shows respect for and adherence to the cultural mores of Swiss society. Consequently, Franklin may require standards of behavior of a higher order than those of society at large. Upon registration at the University, students retain all of their rights guaranteed by law; however, student status confers no immunity from the laws of the Swiss community, nor do sanctions for the breaking of Swiss law exempt them from further disciplinary action by the University. The Code of Conduct is established to provide a system for dealing fairly and responsibly with students whose behavior fails to meet the standards of the University or which infringes upon the rights of others. Students are subject to the Code of Conduct at all times during the academic term, between terms, during Academic Travel, on or off campus.**

Source: *Franklin University Switzerland Student Life Handbook*

**Franklin University Switzerland considers student residence life an integral part of the educational experience.** Our residences give students the opportunity to experience the challenges and rewards of living on their own. In order to cultivate and promote individual growth and maturity, the University offers fully furnished apartments — complete with their own bathrooms and kitchenettes — in addition to traditional-style residence hall rooms. These apartments provide students with privacy and a sense of personal responsibility.

The residences are located in nine different buildings on or near campus. Each residence is supported by a trained Resident Assistant who helps students obtain the most from their residential experience. All students living in Franklin residences are covered by an insurance policy for their personal possessions.

## HOUSING GUIDELINES

Any Franklin student who is registered for a full 12-hour course load is eligible to live in the University residences. Franklin University Switzerland requires all single, new, incoming students who are not residing with their parents or legal guardians to live in a University residence. However, if a student has over 60 credit hours (or is over the age of 20), has a cumulative GPA of 2.8 or higher, is in good standing and has parental permission, he or she can apply to live off campus. Once a student receives approval from the University, he or she may lease an apartment in the local community. Students applying to live off-campus need to do so through the Office of Student Life.

The University's residential life program is designed to foster independent and community living as well as academic focus during a student's time at Franklin. All students living on campus must sign the Franklin University Switzerland Housing Agreement which details the policies and procedures of the residences. Further details about specific housing policies can be found online at: [www.fus.edu](http://www.fus.edu).

### Resident Assistants

A Resident Assistant (RA) is a full-time Franklin student who is trained to be a resource for students within their residence. RAs are trained to provide peer support, organize programs for community development and enforce residence hall policies. Your student's Resident Assistant is also the person who will help with checking in and out of the residences at the beginning and end of the year. RAs lead a monthly hall meeting for their residents during which they provide updates on campus events, community happenings, and convey important information about logistics on campus (such as health & safety updates during travel, check out procedures, etc.).

### Housing Selection for Returning Students

Each spring semester, the housing selection for the following academic year occurs. The dates, location and order of return housing registration will be announced by the Office of Student Life. The housing deposit must be paid in full before a student is allowed to participate in this process. This deposit will later be deducted from

# RESIDENTIAL LIFE

## CONTINUED

the total semester residence fees. This fee is nonrefundable if the student fails to attend Franklin in the fall.

### Room/Apartment Changes

A student room/apartment is rented for the full academic year (with the exception of pre-established semester abroad students) and cannot be changed in most circumstances due to requirements of the local authorities concerning the student's residence permit. However, in the case of emergencies and with the permission of the Assistant Director of University Housing, a student may change rooms provided that there is other space available. Room/apartment and roommate changes will not be granted during the first two weeks of the semester, except in extreme cases. The reason for this is to give residents the opportunity to work out their problems and find an acceptable living arrangement.

### Room/Apartment Damage

Students will be fined for missing inventory and any room damages that occurred while they were occupying a room/apartment. Any extra items left in rooms will be removed and disposed of. Removal fees will be assessed for any furniture or items left in student rooms that are not part of the room inventory. Additionally, cleaning and plumbing charges will be assessed for rooms left in a messy or unclean condition. Students who violate the smoking policy will be charged for repainting the room and replacing the mattress and the curtains. If you have questions regarding your student's dorm damage charges, please contact the Assistant Director of University Housing.

### Smoking Policy

All Franklin Residences are completely smoke-free indoors. In Airone, Girasole, Panera and Giardino, smoking is permitted only on balconies provided that the entry door is closed. Cigarette butts must be disposed of properly. In DaVinci, smoking is not permitted on the balconies and permitted only outside of the buildings near the entry. Violations of the smoking policy will result in fines, disciplinary sanctions and payment for replacement of room/apartment furniture, repainting and any other smoke-related damage.

### Alcohol and Drug Abuse Policy

Switzerland's minimum drinking age is 18. Students who choose to consume alcohol are expected to do so responsibly. All events sponsored by clubs, organizations or departments of Franklin University Switzerland should provide nonalcoholic beverages and food any time alcoholic beverages are served. Any events which directly promote the consumption of alcohol are prohibited. Alcoholic beverages may not be sold at any time on campus. Only alcohol that is provided by the host(s) during the event is permissible in the University facilities. Therefore, students are not permitted to bring their own alcohol to student events on campus. Excessive consumption of alcohol and the display of inappropriate behavior as a result of the consumption of alcohol will be dealt with under the disciplinary guidelines of the University.

## LIVING OFF-CAMPUS

Franklin University Switzerland requires all full time students not residing with their parents or legal guardians to live in a Franklin University Switzerland Residence. Students may live off-campus only if they apply by March 30, 2018 or November 10, 2017 (for Fall Leave of Absence students) and meet the following requirements:

- The student must have over a 2.8 cumulative GPA.
- The student must have written permission from a parent or legal guardian.
- The student must have at least 60 credit hours or be over 20 years of age.
- Be in good standing with no Class 2 or Class 3 conduct violations in their file for at least one academic year prior to the application deadline.
- The student must receive permission from the University.

Students who wish to live off campus must apply through the Office of Student Life. Students who wish to live off-campus must also sign the Off-Campus Living Agreement. Please note that applying to live off-campus does not automatically guarantee approval.

N.B. Financial Aid may be impacted when a student decides to live off campus. It is important to check with the Financial Aid office before receiving permission.

## FOOD SERVICES

From regional and international specialties to vegetarian cuisine, Franklin's dining services in the North Campus Dining Hall and the Grotto serve a large variety of healthy, tasty and fresh food options using local, fair trade and sustainable products. While cash and credit cards will continue to be accepted at all Franklin dining centers, the Falcon Card is the best way to ensure both convenience and lower costs for students dining on-campus.

The *North Campus Dining Hall* is a great place to meet between classes on the North Campus, whether to study with friends or just grab a quick coffee on the go. It is a full-service dining room offering a wide variety of local and international cuisine. All food that is served in the North Campus Dining Hall is freshly prepared every day.

The *Grotto*, Franklin's eatery, located on the Kaletsch Campus is a place to rejuvenate in a relaxing laid-back atmosphere. At the Grotto, you can use your meal debit card plan, cash or credit card to purchase coffee, drinks, snacks and a wide variety of other food items, including burgers, veggie burgers, salads, pastas, wraps and a daily full meal special.

## HEALTH CARE AND HEALTH INSURANCE

Swiss law requires that all students be fully covered by a Swiss medical aid plan during their stay in Switzerland. Franklin has established a contract with SWICA, a medical insurance company, to cover all students' medical needs. Students will receive a SWICA card approximately four weeks after arrival and should keep the

card with them at all times. For more information regarding Swiss law and health insurance coverage, please visit the Franklin website at: [www.fus.edu/campus-resources/health-counseling](http://www.fus.edu/campus-resources/health-counseling).

### **Medical Emergencies**

For minor medical emergencies students are advised to call the Resident Assistant on duty. The RA will assist the student and call additional support if necessary. For serious medical emergencies, students are advised to call the Swiss emergency number 144 from any mobile or public phone.

### **University Nurse and Counselor**

The University Nurse, Christina Schmid, is a trained nurse. She speaks English and Italian. She cannot prescribe drugs but can advise students about over-the-counter options and make referrals to local physicians.

The University Counselor, Corbin Moro, has provided psychological counseling to Franklin students on an as-needed basis for several years and began working in the Office of Student Life in 2005. She provides private and group counseling to students and conducts Residence Advisor training sessions. She holds an M.A. in Clinical Psychology, a B.A. in psychology and a degree in hypnotherapy. She qualified to become a Swiss registered psychologist in 1994.

The University Counselor provides private and group counseling to students for any problems they may have during their stay at Franklin. Support is available to students during the academic school year and for consultation free of charge during posted office hours. The University offers five free counseling sessions to its students, after which their health insurance will be billed, or private payment will be arranged if preferred. Referrals to other professionals in the Lugano area, including an English speaking psychiatrist are also available. Office hours are posted within the Office of Student Life. Corbin Moro speaks English, Italian and French and is also a trained hypnotherapist.

For office hours and contact information of the University Nurse and the University Counselor, visit the Franklin website at: [www.fus.edu/health-and-counseling](http://www.fus.edu/health-and-counseling).

### **Prescription Medication**

Prescriptions from countries other than Switzerland will not be filled by Swiss pharmacies. We recommend that students who take regular medication see a Swiss physician after their arrival. The University Nurse or University Counselor (in the case of a psychotropic medicine) will refer students to a local physician who can prescribe the appropriate medication. Students can bring their medication from home, but some drugs are only permitted to be brought into the country in limited supply, accompanied by a copy of the prescription. Students bringing in medication may be asked to deposit it, under lock and key, in the health center office, where it can be distributed on a weekly or monthly basis. Please address any specific questions directly to the University Nurse at: [nurse@fus.edu](mailto:nurse@fus.edu).

### **SWISS STUDENT VISA**

All non-Swiss students must obtain a Swiss Student visa to study in Switzerland. Students who have confirmed their enrollment will receive detailed information regarding the visa application process, with the necessary documents to apply for the visa in May. Students should be sure that their passports are valid for at least 12 months after the date they will enter to begin their studies. Parents and students who have questions about the visa process should contact the Admissions office ([info@fus.edu](mailto:info@fus.edu)).

### **LOCAL TRANSPORTATION**

The public transportation system is well developed in Lugano and the neighboring communities. Some students find it inconvenient to buy transportation for the year: a moped (“motorino”) or a used car. Due to the high cost of gasoline, insurance and the lack of parking on campus, the University discourages students from purchasing cars.

### **Automobiles and Swiss Driver's License**

In order to drive a car in Switzerland, you must be 18 years old and possess a valid driving license. If the vehicle has Swiss plates, it must be insured according to the stipulations of Swiss law.

If your son or daughter wishes to drive an automobile in Switzerland (whether he/she owns/leases a car, rents a car or is driving the car of a friend) he/she has one year from the date of arrival in Switzerland to obtain a Swiss driver's license based on a valid license from his/her home country.

### **Student Parking**

The use of Franklin parking facilities, with the exception of the guest parking spaces, requires registration and a parking permit at all times. All student vehicles operating on the Franklin campus are to be registered with the Office of Student Life. Parking staff will determine which type of permit is available to meet each student's needs. Applications for parking permits can be made at the Office of Student Life during business hours. Franklin University Switzerland assumes no liability or responsibility for vehicles or their contents while parked or driven on University property. This includes lost or stolen permits.



**Most students, regardless of maturity, disposition, previous experience abroad or knowledge of their host country, will experience some degree of culture shock.**

Culture shock is a term used to describe some of the more pronounced reactions to spending an extended period of time in a culture very different from your own. Culture shock can be characterized by periods of frustration, adjustment and even depression. The worst homesickness often occurs two to three months after students leave home. It is common for students to call or write home during moments of low morale, but not when they are busy and things are going well. Consequently, families often picture a more negative situation than actually exists.

Not everyone will experience culture shock. However if your student does, it is helpful to be able to recognize it when it occurs so you will understand what is really happening.

There is no one way to experience culture shock. It may be acute or barely noticeable. You may find it returns after you thought your student had already passed through all the stages. As a parent, you may not even be aware that your student is going through culture shock, or to what extent. Simply be aware that culture shock exists, that it will probably affect your student in one way or another, but that it doesn't last forever. Culture shock can be a very valuable experience which can leave people with broader perspectives, deeper insights into themselves and a wider tolerance for other people.

If you think that your student is experiencing severe culture shock, please feel free to contact a University staff member.

## REVERSE CULTURE SHOCK

Students often go through a phase of "reverse" or "re-entry" culture shock when they go home after spending time abroad. They expect to go through adjustments in foreign countries, but do not always realize that life has continued on without them at home and that there may be changes for which they were not prepared. As with culture shock, one way to alleviate the difficulty of re-entry shock is to keep your student aware of what is going on at home through consistent communication. Students often go through periods of mild depression once they return home because of feelings that no one is interested in what they experienced in their time overseas. Faced with questions such as "How was your time in Switzerland?", a student often can only answer "Great" before conversation moves on to another subject. Encourage friends and family members to ask more specific questions like, "What are the best things about living abroad? The most difficult? Where did you go on Academic Travel? Do you have any pictures?" etc. Not only will such questions remind students they had a worthwhile experience and help them to readjust, it will also help others in your community learn more about the world around us.

Source: *University of Wisconsin, International Academic Programs*

**Franklin University Switzerland recognizes the importance of aid programs, merit and need based, to students and families.**

It is expected that the student and his/her parents will contribute to the fullest possible extent so that the University's limited financial aid funds can be shared most equitably among the greatest number of qualifying students. Financial need is defined as the difference between the family's or student's available resources and the cost of attending Franklin University Switzerland.

Franklin University Switzerland does not discriminate in its admissions and financial aid policies and practices on the basis of factors such as race, sex, sexual orientation, age, color, religion or regional origin.

## NET PARTNER

Net Partner is our online financial aid portal. Students will be provided with a User Name and password upon admission and all aid processes will be managed via this portal, throughout the students' stay at FUS. Please note, Franklin will only share the Net Partner login credentials with the student. We cannot provide access to parent(s) unless we receive explicit permission from the student.

For more information about funding at Franklin, please contact the Office of Financial Aid at [finaid@fus.edu](mailto:finaid@fus.edu).

## FINANCIAL AID

### US Citizens/Permanent Residents

Students holding US citizenship or permanent residence must file the Free Application for Federal Student Aid (FAFSA) to be considered for need-based aid. This form must be completed online each year at [www.fafsa.ed.gov](http://www.fafsa.ed.gov). Please note that the Franklin University Switzerland Department of Education Code is G11683.

### Non-US Students

Non-US students must submit the Franklin University Switzerland Financial Aid Form to be considered for need-based aid. This form should be submitted online via Net Partner, our financial aid portal. User name and password will be shared upon admission and/or by emailing the Office of Financial Aid directly ([finaid@fus.edu](mailto:finaid@fus.edu)).

### Financial Aid Renewal

Returning students must reapply for financial aid each year, by resubmitting the FAFSA or FA application whichever is applicable. This means the FAFSA or the Financial Aid Application must be submitted each year. Financial assistance will be renewed if continuing need is demonstrated, the student maintains a minimum GPA of 2.5, is in good social standing with no disciplinary infractions and a new FAFSA or Financial Aid Application is submitted. Please note, if students choose to move off campus once enrolled, their institutional aid will be reduced by 20%.

### Federal restrictions on Study Abroad for US students

Any FUS student who is a US citizen or permanent resident who is making plans to Study Abroad, take classes in the US or online should contact the Office of Financial Aid at [finaid@fus.edu](mailto:finaid@fus.edu) prior to making firm plans. The government has placed

restrictions on credit transfers for student at US foreign schools and students are at risk of losing federal aid eligibility upon transferring credits to FUS once they have enrolled with the school. This does not apply to credits that are earned prior to the student enrolling at Franklin.

Additional Information please visit the Franklin website at: [www.fus.edu/admissions/tuition-and-aid/scholarships-and-financial-aid](http://www.fus.edu/admissions/tuition-and-aid/scholarships-and-financial-aid).

## SCHOLARSHIPS AND MERIT AWARDS

Franklin University Switzerland offers merit based scholarships. These awards are eligible for renewal each year provided the student maintains a minimum GPA of 2.8 and is in good social standing with no disciplinary infractions. Students receiving merit awards are required to live in a University residence.

## PAYMENTS OF INVOICES AND FEES

Full payment of invoices is due by July 28, 2017, for the fall semester invoices and December 18, 2017, for the spring semester invoices. Once registered for courses, students will be sent a billing statement payable on receipt. Failure to receive a billing statement does not relieve the responsibility to pay by the due date. If a statement is not received 10 days before the payment due date, please contact the Bursar's Office in Lugano directly at [bursar@fus.edu](mailto:bursar@fus.edu).

## BANKING

All major Swiss banks are represented in Lugano. Swiss banks are open from 8:30 a.m. until 4:00 p.m., Monday through Friday. If you need to change money after normal banking hours or during the weekend, you may do so at the train station. The exchange office there is open from 7:00 a.m. until 7:40 p.m., Monday through Saturday, and 8:00 a.m. until 6:45 p.m. on Sunday.

During the past few years, Swiss banks have become increasingly focused on private and investment banking, and students may find it difficult to open an account. Fortunately, advances in electronic banking mean that students can maintain their bank accounts at home, and with an ATM card they can access their funds from all European countries. This is also an advantage for parents since money can be easily deposited into the student's home bank account, which eliminates any delay in the student receiving the funds and also avoids the expense of bank transfer fees. A valid passport as well as a residence permit are needed to open an account. Depending on the account and the bank, a deposit or minimum amount of credit may be needed.

## ATMS AND MONEY EXCHANGE

ATMs/automated tellers are readily accessible around town, in supermarkets and at the train station. Visa and MasterCard are used throughout Europe and may be utilized for cash withdrawal from automated tellers with the appropriate PIN number. Money exchange can be done at local banks and at the train station. Western Union is available at the train station.

**Reception**  
+41 91 985 2260

**24/7 Emergency**  
+41 79 211 4689  
Please use this number only in an emergency situation when you need to get a hold of your student.

**Director of Alumni and Parent Relations**  
Tara Bracher\*  
[tbracher@fus.edu](mailto:tbracher@fus.edu)  
+1 310 597 1502

**OFFICE OF STUDENT LIFE**  
**Dean of Student Life and Engagement**  
Deborah Knaust  
[dknaust@fus.edu](mailto:dknaust@fus.edu)  
+41 91 986 5329

**Assistant Dean of Student Life and Director of Career Services**  
Ebonie Rayford  
[erayford@fus.edu](mailto:erayford@fus.edu)  
+41 91 986 5329

**Coordinator of Student Services**  
(Coordinator of Swiss residents permits and health insurance)  
Sabina Macchi  
[smacchi@fus.edu](mailto:smacchi@fus.edu)  
+41 91 986 5329

**Administrative Assistant to Student Services**  
Elena Sartori  
[esartori@fus.edu](mailto:esartori@fus.edu)  
+41 91 986 5329

**Director of Student Leadership and Engagement**  
Russell Martin  
[rmartin@fus.edu](mailto:rmartin@fus.edu)  
+41 91 986 5329

**Assistant Director of University Housing**  
Cristina Elvira Pérez  
[celviraperez@fus.edu](mailto:celviraperez@fus.edu)  
+41 91 986 5329

**University Counselor**  
Corbin Moro  
[counselor@fus.edu](mailto:counselor@fus.edu)  
+41 91 986 5329

**University Nurse**  
Christina Schmid  
[nurse@fus.edu](mailto:nurse@fus.edu)  
+41 91 986 5329

**OFFICE OF THE PRESIDENT**  
**President's Office**  
Greg Warden  
[gwarden@fus.edu](mailto:gwarden@fus.edu)  
+41 91 985 2266

**OFFICE OF ACADEMIC AFFAIRS**  
**Dean of Academic Affairs**  
Sara Steinert Borella  
[ssteinertborella@fus.edu](mailto:ssteinertborella@fus.edu)  
+41 91 986 3652  
+41 91 985 2291

**Registrar**  
Carole Wellington  
[registrar@fus.edu](mailto:registrar@fus.edu)  
+41 91 986 3666

**Instructional and Access Services Librarian**  
Clèlie Riat  
[criat@fus.edu](mailto:criat@fus.edu)  
+41 91 985 2274

**Director of Writing and Learning Center**  
Ann Gardiner  
[agardiner@fus.edu](mailto:agardiner@fus.edu)  
+41 91 985 2291

## ADMINISTRATIVE OFFICES

**Vice President for Finance and Administration**  
Tomaso Rizzi  
[trizzi@fus.edu](mailto:trizzi@fus.edu)  
+41 91 986 3624

**Vice President for Enrollment Management and Marketing**  
William Mullen  
[wmullen@fus.edu](mailto:wmullen@fus.edu)  
+41 91 985 2260

**Director of Admissions**  
Lucila Perez Mollo  
[lperezmollo@fus.edu](mailto:lperezmollo@fus.edu)  
+41 91 986 3612

**Director of Public Relations**  
Consuelo Grieco '02  
[cgrieco@fus.edu](mailto:cgrieco@fus.edu)  
+41 91 986 3609

**Director of Communications**  
Alette Wilmotte  
[awilmotte@fus.edu](mailto:awilmotte@fus.edu)  
+41 91 986 3603

**Director of Financial Aid**  
Sigrun Olafsdottir\*  
[solafsdottir@fus.edu](mailto:solafsdottir@fus.edu)  
+1 387 337 8552

**Bursar**  
Jelena Bakic  
[bursar@fus.edu](mailto:bursar@fus.edu)  
+41 91 986 3623

**Director of IT Services**  
Sean Essue  
[sessue@fus.edu](mailto:sessue@fus.edu)  
+41 91 986 3617

*\*Based in the United States*



**FRANKLIN**  
UNIVERSITY  
SWITZERLAND

Via Ponte Tresa 29  
6924 Sorengo  
Switzerland

**FUS.EDU**