

A glowing globe of the Earth is the central focus, resting on a bed of vibrant green grass. The globe is illuminated from within, casting a warm, golden light that highlights the continents and the grid of latitude and longitude lines. The grass blades are sharp and detailed, creating a natural, textured background. The overall composition conveys a sense of environmental care and sustainability.

Living More Sustainably at Franklin College Switzerland

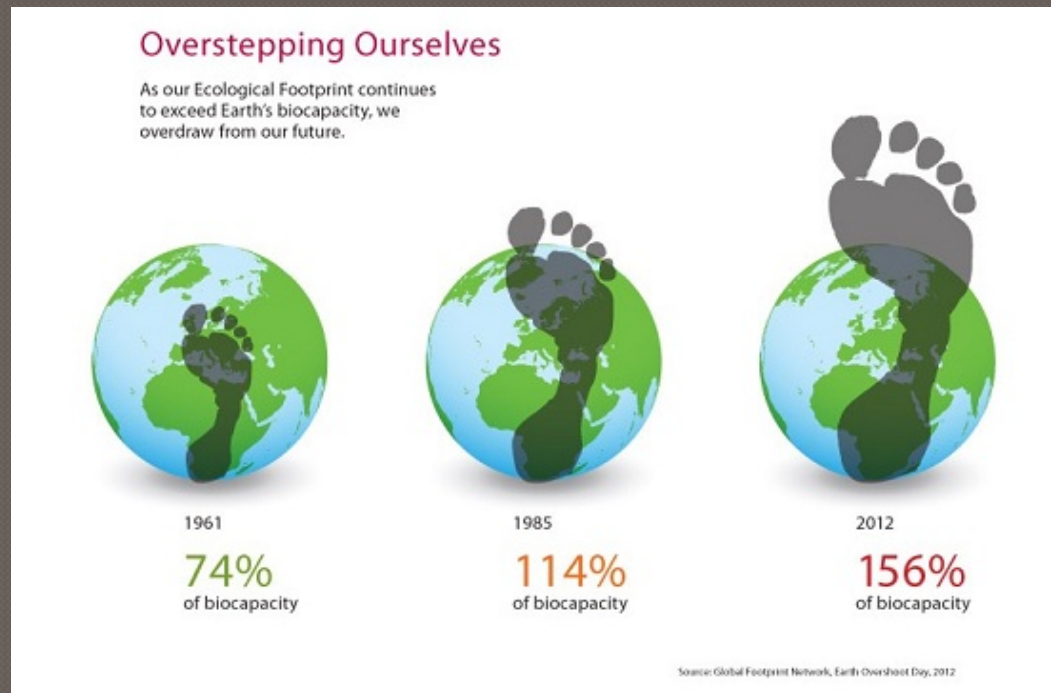
Overview

- I. What is Sustainability?
- II. The Swiss Lifestyle
- III. Recycling
- IV. Transportation
- V. Food
- VI. Tips
- VII. Student Resources

What is Sustainability?

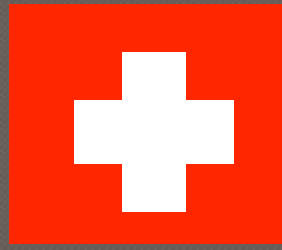
“Sustainable societies are those that embrace ... lifestyles and practices that meet the needs of the present generation without compromising the ability of future generations to meet their own needs.”

--U.N. Commission on Sustainable Development.



Why live more sustainably?





Swiss sustainability

- Recycling mandated by Swiss law—responsibility on individual.
- Excellent public transport
- Strong support of organic and local produce



RECYCLING

Recycling centers

- Lugano's *ecopunti* and *ecocentri*

- For Alba, Florida, Girasole
- Ecopunto: Glass, cans, paper, batteries, trash
- Closest: across from Co-op downtown (back entrance); FFS station parking lot

- <http://www.lugano.ch/en/lugano-urbana/gestione-ambientale/raccolta-rifiuti.html>



- Sorengo recycling center (SRC)

- For Airone, Ciliegi, Giardino, LDV, New Dorms, Panera

Recycling on-campus

○ Kaletsch campus

- Bins for PET and cans inside grotto
- Bin for glass outside grotto (by art studio)



○ North Campus

- Bins for PET and cans inside grotto
- Compost bins near garden
 - NB: only put compostable waste in bin!



Please rinse all containers before recycling!

TRANSPORTATION

Transportation

- The most sustainable methods include:
 - Walking
 - Riding a bicycle
 - Bike-sharing Lugano
 - 24/7 access to rentable bikes from five stations around Lugano
 - Passes and access cards available at Lugano Turismo downtown
 - www.velopass.ch
 - Taking public transportation



Public Transportation

○ Buses

• **Posta Bus (*Autopostale*)**

- Stops on Via Ponte Tresa by Clinica Sant'Anna and New Dorms.
- www.postbus.ch

• **TPL Bus**

- Runs by Alba, Florida and Girasole residences
- www.tplsa.ch



○ Trains

• **FLP Train (*il Trenino*)**

- Stops behind Giardino and North Campus stops
- Goes to train station, Caslano, Ponte Tresa
- www.flpsa.ch



• **SBB/FFS/CFS**

- Regional and national trains
- www.sbb.ch

Transport passes

○ Arcobaleno:

- Pass for all public transport in Ticino.
- Student discount.
- Passes can be bought monthly or annually.
- www.arcobaleno.ch (in Italian).

○ Swiss rail half pass:

- Annual pass with 50% discount on all public transport in Switzerland and on many of special offers.
- Also provides 25% on rail tickets in Germany and Austria.
- More info at www.sbb.ch (in English and all CH languages).

○ Binario 7:

- Supplement to the half pass for persons under 26 that provides free travel on all trains after 19.00 daily.

- **NB: Pass representative will be on North Campus 27.08 from 09.00 – 15.00**



FOOD



Sustainable Food

◉ Bio Products

- *bio = organic = ecological*
- Available at most grocery stores including Manor, Migros, and Coop.

◉ Local Products

- Labeled in stores
- Local farmer's markets:
 - Lugano: T & Fr mornings
 - Ponte Tresa: Sa mornings
 - Bellinzona: Sa mornings

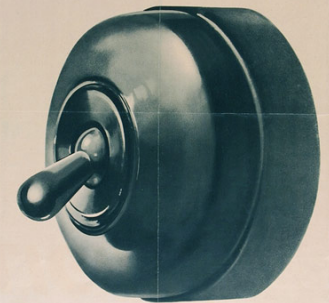
◉ Campus Garden



Simple Tips

- Turn off/Unplug electronics when not in use—lights, computers, chargers, etc.
- Do not use heating or air conditioning with windows open.
- Avoid products with excessive, disposable packaging.
- Use your SIGG bottles on campus—local tap water is better than bottled water!
- Use reusable grocery bags.

*Switch off that
LIGHT!*



Resources

○ Center for Sustainability Initiatives

- Top Floor, North Campus Villa
- <http://www.fc.edu/center-for-sustainability-initiatives>
- Like us on Facebook!
- LLLS: Lana Dayne and Sean McErlane

○ Office of Student Life

QUESTIONS, COMMENTS, SUGGESTIONS?